

GET READY TO WIN AT WAUBONSEE!



WAUBONSEE
COMMUNITY COLLEGE

Table of Contents

| | |
|---|----|
| Important Dates | 3 |
| Add or Drop a Class | 4 |
| Student Services Descriptions and Contact Information | 5 |
| Email Types | 6 |
| xcard | 6 |
| Free Application for Federal Student Aid (FAFSA)..... | 7 |
| Food Options | 8 |
| Study Abroad Program | 8 |
| Student Life | 9 |
| Tutoring Center | 10 |
| Waubensee Support Programs..... | 11 |
| Library Services | 12 |
| Foundation Scholarships | 13 |
| Find out What's Happening on Campus | 14 |
| Diversity, Equity, and Inclusion (DEI)..... | 15 |
| Latinx Resource Center | 16 |
| Fitness Center | 17 |
| Student Social Influencers..... | 17 |
| Register to Vote | 18 |
| Social Leaders Program | 18 |
| Bookstore..... | 19 |
| Honors Program..... | 20 |
| Peer Support Leaders | 21 |
| Student Jobs at Waubensee..... | 22 |
| Title IX..... | 23 |



Are You Graduating This Spring?

Apply by Feb. 14 to Participate in Commencement on May 17!

If you are near the finish line, make sure you petition for graduation by filling out an **Intent to Graduate** form.

May graduation candidates must apply for graduation no later than February 14.

Apply at: mywcc.waubensee.edu/graduation

Questions? Email graduation@waubensee.edu



2025

January

| S | M | T | W | T | F | S |
|----|----|----|----|----|----|----|
| | | | 1 | 2 | 3 | 4 |
| 5 | 6 | 7 | 8 | 9 | 10 | 11 |
| 12 | 13 | 14 | 15 | 16 | 17 | 18 |
| 19 | 20 | 21 | 22 | 23 | 24 | 25 |
| 26 | 27 | 28 | 29 | 30 | 31 | |

February

| S | M | T | W | T | F | S |
|----|----|----|----|----|----|----|
| | | | | | | 1 |
| 2 | 3 | 4 | 5 | 6 | 7 | 8 |
| 9 | 10 | 11 | 12 | 13 | 14 | 15 |
| 16 | 17 | 18 | 19 | 20 | 21 | 22 |
| 23 | 24 | 25 | 26 | 27 | 28 | |

March

| S | M | T | W | T | F | S |
|----|----|----|----|----|----|----|
| | | | | | | 1 |
| 2 | 3 | 4 | 5 | 6 | 7 | 8 |
| 9 | 10 | 11 | 12 | 13 | 14 | 15 |
| 16 | 17 | 18 | 19 | 20 | 21 | 22 |
| 23 | 24 | 25 | 26 | 27 | 28 | 29 |
| 30 | 31 | | | | | |

April

| S | M | T | W | T | F | S |
|----|----|----|----|----|----|----|
| | | | 1 | 2 | 3 | 4 |
| 5 | 6 | 7 | 8 | 9 | 10 | 11 |
| 12 | 13 | 14 | 15 | 16 | 17 | 18 |
| 19 | 20 | 21 | 22 | 23 | 24 | 25 |
| 26 | 27 | 28 | 29 | 30 | | |

May

| S | M | T | W | T | F | S |
|----|----|----|----|----|----|----|
| | | | | 1 | 2 | 3 |
| 4 | 5 | 6 | 7 | 8 | 9 | 10 |
| 11 | 12 | 13 | 14 | 15 | 16 | 17 |
| 18 | 19 | 20 | 21 | 22 | 23 | 24 |
| 25 | 26 | 27 | 28 | 29 | 30 | 31 |

Important Dates – Spring Semester 2025

Registration/ Withdrawal

| | |
|---|-----------------------|
| First day of classes (16-week, first 8-week, first 4-week courses).... | Tues., Jan. 21 |
| Weekend classes begin (15-week, first 7-week courses) - Saturday | Jan. 25 |
| Withdrawal deadline for first 4-week courses..... | Feb. 7 |
| 12-week & second 4-week courses begin..... | Feb. 17 |
| Last day to claim honor student status designation in a 16-week course..... | Feb. 17 |
| Withdrawal deadline for first 7-week weekend courses..... | Feb. 24 |
| Withdrawal deadline for first 8-week courses..... | Feb. 28 |
| Summer semester registration begins at 8 a.m. | March 3 |
| Withdrawal deadline for second 4-week | March 7 |
| Midterm – last day to change audit enrollment status* | March 12 |
| Second 8-week & third 4-week courses begin | March 24 |
| Second 7-week weekend courses begin..... | March 29 |
| Withdrawal deadline for third 4-week courses | April 11 |
| Withdrawal deadline for 15-week weekend courses..... | April 14 |
| Withdrawal deadline for 16-week courses | April 18 |
| Fourth 4-week courses begin | April 21 |
| Withdrawal deadline for 12-week courses..... | April 25 |
| Withdrawal deadline for second 7-week weekend courses | April 28 |
| Withdrawal deadline for second 8-week courses | May 2 |
| Fall semester registration begins at 8 a.m. | May 5 |
| Withdrawal deadline for fourth 4-week courses..... | May 9 |
| Semester ends | May 16 |
| Commencement..... | May 17 |
| Grades available to students – Wednesday** | May 21 |

Refund Deadlines

| | |
|-------------------------------------|----------|
| First 4-week courses | Jan. 22 |
| First 8-week courses | Jan. 24 |
| First 7-week weekend courses | Jan. 27 |
| 16-week courses | Jan. 31 |
| 15-week weekend courses | Jan. 31 |
| Second 4-week courses | Feb. 18 |
| 12-week courses | Feb. 21 |
| Third 4-week courses | March 25 |
| Second 8-week courses | March 28 |
| Second 7-week weekend courses | March 31 |
| Fourth 4-week courses | April 22 |

Holidays

| | |
|--|---------------|
| Martin Luther King, Jr. Day – Monday (<i>Classes will not meet</i>) | Jan. 20, 2025 |
| Spring break – Monday through Sunday (<i>Classes will not meet</i>) | March 17-23 |
| Easter Sunday (<i>Classes will not meet</i>) | April 20 |

We Want You to Be Successful!

At Waubonsee, you are never alone, regardless of your stage of life or the type of student you are. There are various types of students at Waubonsee, all working towards similar goals, like you. Remember that we have your back and are here to assist you in getting the most out of your Waubonsee student experience.

HOW TO ADD A CLASS.

There's still time to register for accelerated courses this spring, with offerings that meet for just eight or twelve weeks. Registration for these courses is open until February 17 or March 24.

Visit waubonsee.edu/accelerated to view the course offerings.

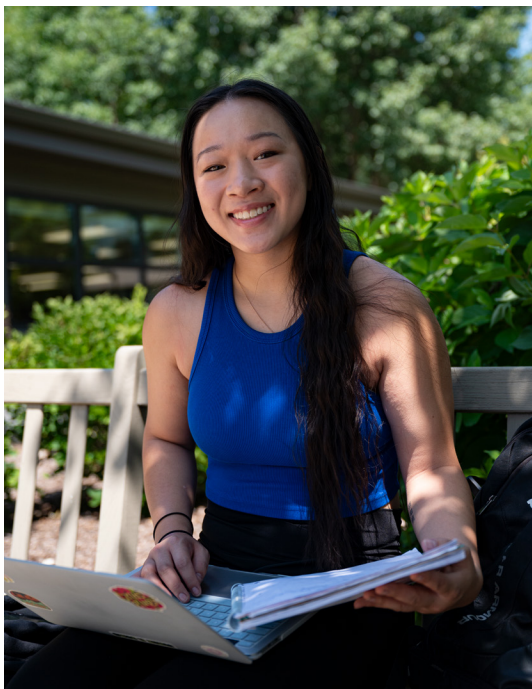
YOU'RE NOT ALONE ON YOUR JOURNEY.

Life happens and you may find yourself needing to add or withdraw from a class. Let us help you understand what options are available and what are possible consequences, so you stay on track to achieve your goals. Checking with your advisor before withdrawing could prevent you from negative consequences, like:

- Being forced to pay back aid already received and/or not be eligible for Financial Aid in the future.
- Having your athletic, international, or veteran status affected (*if applicable*).

What's the best thing to do before withdrawing from a class? Talk with your assigned advisor. They are experts in knowing how you can manage challenges you face as a student.

Visit waubonsee.edu/AdvisingAppt to make an appointment.



HOW TO SUCCEED IN CLASS:

1. **Get Familiar with Your Course Syllabus** - Here is where you'll find course policies, expectations, strategies to succeed, deadlines, and instructor contact info.
2. **Learn to Organize Your Time** - Use a calendar (paper or digital) and block out times for your various activities, including class time, homework, and study time.
3. **Get to Know Your Faculty Member** - Reach out if you have a question or need help. If you find you need additional support outside of the classroom, reach out to your academic advisor or check out the Tutoring Center.

Student Services:

Academic and Career Advising

(630) 466-2361

STC 262; DWNTN 110; FOXVLY 231; PLANO 127

While at Waubonsee, you'll have an assigned Academic and Career Advisor starting your first semester. You and your advisor will work one-on-one throughout your time at Waubonsee to help you reach your academic and career goals. Schedule a time to meet—we're here to support you!

Counseling Services

(630) 466-2361

STC 262; DWNTN 110

Counselors assist students with issues such as career and educational goals, transfer planning, programs of study, lifestyle transitions related to education, and other personal issues that may interfere with academic progress. Counselors can also assist students in distress and offer community referrals for issues such as domestic and sexual violence, addiction, depression, and other personal issues.

Access Center for Disability Resources

AccessCenter@waubonsee.edu

(630) 466-2564 or Videophone (630) 405-6110
STC 201

The Access Center for Disability Resources is a resource for faculty, staff, and students. The Access Center is committed to collaborating with the campus community to increase accessibility and reduce barriers for persons with disabilities and to ensure effective delivery of student accommodations. To receive accommodations, students must declare their disability to the Access Center and complete the accommodations request process.

S.T.A.R. (Student-Athletes Taking Academic Responsibility) Program

(630) 466-2525

The S.T.A.R. Program guides student-athletes through a successful transition to their career goals. Each student is provided with one-on-one personal, career, and academic counseling and advising. Academic monitoring is done on an ongoing basis. A weekly study hall is required for all student athletes.

Veterans' Services

Waubonsee is proud to support students who have served or are serving their country. Military-connected students can receive assistance in applying for Financial Aid, State or Federal Benefits, and registering for courses. Community resources can also be provided to those who qualify. Assistance with educational planning, transfer planning, academic progress, financial aid questions, and benefits questions or issues are provided. Veteran Services also provides programming to military-connected students.

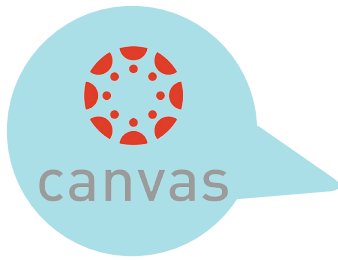
For assistance with academic and career advising, benefit/referral information, and the evaluation of military training for college credit, please contact:

Transfer/Veterans Advisor at (630) 466-2091

For assistance with financial aid and veterans' benefits, contact: **Veterans Advisor at (630) 466-6847**



Types of Email - Know the Difference.



CANVAS EMAIL

- Found in the Canvas Menu
- For communication regarding your classes from faculty or other students in your classes



*Need help
accessing
your email?*



STUDENT EMAIL

- Found in mywcc
- For communication regarding campus activities, student accounts, information you need to know

Get Your XCARD

What is an XCARD?

An **XCARD** is a card with your photo, name and x-number printed on it.

It makes using student services easier!

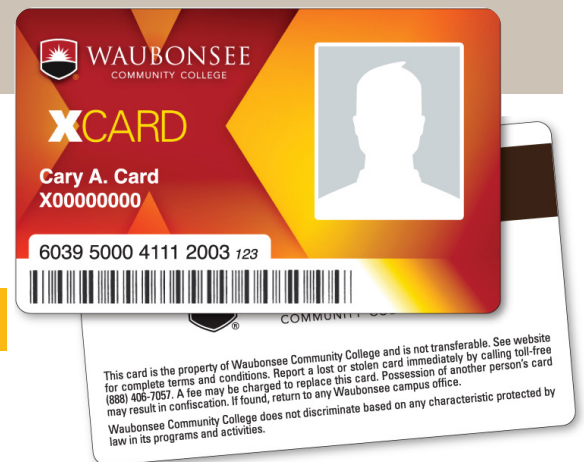
Carry one for quick access to your nine-character X-number used for library checkouts, bookstore purchases, Wi-Fi, and mywcc, as well as other student services.

Do they cost anything? What should I bring with me?

Nope. Your first card is **FREE!** If you lose it, and need a replacement, a \$10 charge will apply. Just bring a government-issued I.D. -- *your driver's license will work!*

Where can I get one?

- The **BOOKSTORE** at Sugar Grove and the Aurora Downtown Campuses (except during the week before classes start and the first two weeks of the fall and spring semesters).
- The **LIBRARY** at the Sugar Grove and Aurora Downtown Campuses one week before classes start and the first two weeks of each semester.
- The **LIBRARY** at the Aurora Fox Valley Campus during regular library hours year-round. ***(TIP: You can get your Nursing I.D. or EMT Badge at this location too!)***





Free Application for Federal Student Aid



KNOW HOW TO APPLY FOR FINANCIAL AID.

We understand there have been challenges in the 2024-2025 FAFSA application process. While the Department of Education continues to work on solutions, the Financial Aid team here at Waubensee wants to make this process as seamless as possible and a better experience for you.

The 2024-2025 FAFSA is now available, yet there are recognized issues that may hinder submissions. Once initiated, your FAFSA will remain active for 45 days, after which you'll need to start a fresh application. If you strongly feel that you need to start the process, you can find help to work through some of the issues you might be experiencing while filling out your 2024-2025 FAFSA at studentaid.gov.

Your success is always our priority, and the FAFSA is crucial for your educational journey. We are here to support you every step of the way and encourage you to reach out with any questions or for more information.

Please be assured that the Department of Education is actively working to resolve the existing challenges and we will keep you updated on the progress. If you encounter other difficulties or have questions, do not hesitate to contact our financial aid office for support.

Financial Aid
(630) 466-5774
waubensee.edu/FAFSA

2024-2025 FAFSA INFORMATION.

The Free Application for Federal Student Aid (FAFSA®) process has changed to implement provisions of the FUTURE Act and the FAFSA Simplification Act. At a high level, the FAFSA changes are a significant overhaul of the FAFSA system, including an updated FAFSA form, need analysis, and provisions to many of the policies and procedures used by schools. The 2024-2025 FAFSA will be in effect for terms beginning with fall 2024.

WHAT CHANGES CAN YOU EXPECT WITH THE FAFSA?

The changes will provide students and families:

- ✓ A more streamlined application process.
- ✓ Expanded eligibility for federal student aid.
- ✓ A new user experience for the FAFSA form.

FOOD OPTIONS ON CAMPUS

Full menu and weekly specials posted at waubonsee.edu/food

Paisano's Pizza and Grill at the Sugar Grove Campus



Student Center Café

Offering breakfast, appetizers, entrees, soups, salads, and sides along with desserts and beverages.

Endiro Coffee at the Aurora Downtown Campus



Aurora Downtown Café

Serving coffee and hot and fresh breakfast and lunch items daily.

Study Abroad Opportunities



Waubonsee's study abroad programs are offered during the summer, fall and spring semesters in partnership with the Illinois Consortium of International Studies and Programs (ICISP). Through ICISP, you can participate in exciting study abroad programs in a variety of different countries such as Austria, Costa Rica, England, France, Ireland, or Spain!

Visit waubonsee.edu/study-abroad

Get Involved with Student Life

There's more to college than classes!

There's a saying that you get out of life what you put into it. The same is true of college.

You're already committed to studying hard and interacting with your professors to excel in your academic pursuits. You can thrive outside the classroom too, and make the most of your time at Waubonsee. The Student Life team is here to help you discover organizations and affiliations that can connect you with your fellow students and inspire you to go farther.

Finding Out About Activities

Most events and opportunities are posted on the college-wide calendar accessible online at calendar.waubonsee.edu or follow us on social media. Also, watch campus bulletin boards, Student Life easels, or the campus TV screens for information. Call the advisor of student organizations that may interest you, or attend the Engagement Fair, held at the beginning of each semester. Visit the Student Life Office on the Sugar Grove Campus in the Student Center, Room 126 for more information or see the calendar of Student Life events on the college-wide calendar.

Student Organizations

Student organizations are a terrific way to enhance your college experience. You can lean into your chosen career field, explore areas of personal interest, or try something new just for fun.

And you'll start to develop your leadership skills right away, because you can get involved from day one.

NEED MORE INFO ABOUT HOW TO GET INVOLVED?

Contact Student Life
at (630) 466-2369 or
studentlife@waubonsee.edu

Join our
canvas course:



The TUTORING CENTER

WHERE GOOD STUDENTS BECOME GREAT STUDENTS

Achieve academic success with our expert tutors and coaches. We offer personalized tutoring in diverse subjects. With flexible scheduling, different ways to meet, and a proven track record, we provide a supportive environment tailored to your needs. Join us and excel in your studies!

Our Services:

- ✓ **SUBJECT SPECIFIC TUTORING:** FROM MATH, SCIENCE, ENGLISH AND MANY MORE
- ✓ **TEST PREP:** GED, TEAS, AND OTHER STANDARDIZED TESTS
- ✓ **ACADEMIC COACHING:** STRATEGIES FOR TIME MANAGEMENT, STUDY SKILLS, AND ACADEMIC ORGANIZATION

Why Visit Us?

- ✓ FLEXIBLE SCHEDULING
- ✓ PERSONALIZED LEARNING
- ✓ SUPPORTIVE ENVIRONMENT
- ✓ PROVEN RESULTS



✉ tutoring@waubonsee.edu

🌐 waubonsee.edu/tutoring

☎ (630) 466-2408



FIND SUCCESS



WAUBONSEE
COMMUNITY COLLEGE

Tutoring Center

WHAT'S ON YOUR MIND?

I am feeling overwhelmed.

I could use some financial support.

I need help finding a place to stay.

I just need someone to talk to.

CONNECT WITH **WAUBONSEE** FOR SUPPORT

Scan the appropriate QR code for more information on how Waubonsee can connect you to the resources you need.

Housing Support



Emergency Assistance



Mental Health Support



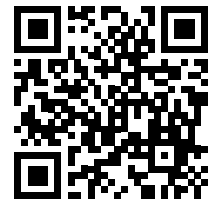
Request Additional Assistance



LIBRARY SERVICES

We have the resources to help you!

For more info:



Research and Citation Help

In-person and online!

Study Spaces

Available for group and solo study

Textbooks & Test Prep Books

Entertainment

- Board games
- Graphic Novels
- Fiction
- and more!

Student Tech & Tech Help

Troubleshooting

Microsoft Office

Loaner laptops

Smart Boards

Canvas

Interlibrary Loan

Borrow books from other libraries!



YOUR SCHOLARSHIP. YOUR FUTURE.



**Apply for a Waubonsee Foundation Scholarship!
Two application deadlines:**

Feb. 3 and May 5, 2025

APPLY EARLY FOR MAXIMUM CONSIDERATION.

300+

AWARDS

\$300,000+

TOTAL FUNDS AVAILABLE

Apply online at:

waubonsee.edu/foundationsscholarships

QUESTIONS?

Contact the Development Office
at (630) 466-2316 or
foundation@waubonsee.edu



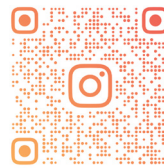
WAUBONSEE
COMMUNITY COLLEGE

FOUNDATION

Find out what's happening on campus!

Follow us on social for the inside scoop on contests, events, and campus updates!

Follow us on your favorite:



TikTok

waubonsee.edu/SocialMedia

Visit calendar.waubonsee.edu for upcoming events and academic dates you don't want to miss!

Check your Waubonsee email each Monday for the latest edition of Things To Know and stay on top of what's happening!

Stay in the Loop with the **STUDENT SCOOP**

JANUARY/FEBRUARY 2025

Spring 2025 Engagement Fairs
Candy Quest: Uncover Campus Gems

Aurora Downtown Campus
Multipurpose Room 160
Monday, February 10
10:30 a.m. to 2 p.m.
AND
6 to 7:30 p.m.

Aurora Fox Valley Campus
Lobby
Tuesday, February 11
11 a.m. to 1 p.m.

Plano Campus
Lobby
Tuesday, February 11
All Day

Sugar Grove Campus
Student Center
Wednesday, February 12
11 a.m. to 2 p.m.

Learn about campus and community resources. Enjoy sweets, crafts, and giveaways!



Scan the QR code for more information about campus events!



When you're filling your water bottle, **LOOK UP** at the Student Scoop poster, highlighting campus events.

Visit calendar.waubonsee.edu to learn more about what's happening on campus!





WHAT IS DEI?

Diversity

means having different kinds of people including different races, ages, abilities, beliefs etc.

Equity

means everyone gets what **they** need to be successful; and not everyone needs the same supports.

Inclusion

means everyone is welcomed and included no matter how different they are.

Learn more about Cultural Events at waubonsee.edu/DEI

June Juneteenth and Pride Month

February Black History Month

Sept./Oct. Latinx Heritage Month/
Hispanic Serving Institution Week

March Women's History Month

October LGBTQ+ History Month

May Asian American and Pacific Islander Month

November Native American Heritage Month

Latinx Resource Center

BIENVENIDOS

Somos Más que un Espacio, Somos Cultural, ¡Identidad y Representación!



WHAT IS THE LATINX RESOURCE CENTER?

The Latinx Resource Center (LRC) is a vibrant space where students and the community feel welcomed and respected. We empower students and promote personal growth through professional development and cultural awareness. Our energetic programming fosters a strong sense of community and belonging.

Our Mission:

The LRC cultivates la familia (family), providing a “home away from home” where we provide comprehensive support and resources to Latinx and other underserved students to meet social, emotional and academic needs and increase inclusive college retention and completion.

Why We Use the Term *Latinx*:

Latinx is a gender-neutral alternative to Latino and Latina, promoting inclusivity and equity in higher education. It represents our commitment to recognizing diverse identities within our community, including LGBTQIA+ individuals.

Our Key Focus Areas:

Comunidad (*Community*)

We share languages, customs, and values, uniting to support each other and ensure every student feels valued.

Conexiones (*Relationship Building*)

Building trust and familial bonds through shared opportunities and celebrations.

Identidad (*Identity*)

Celebrating origins, talents, and virtues, making students proud of their achievements and goals.

Liderazgo (*Leadership*)

Empowering students to believe in themselves, take chances, and lead initiatives for personal and professional growth.

Support and Resources Offered:

- **Academic Guidance:** Providing resources and support to help students succeed academically, FAFSA applications, study groups, and workshops on effective study strategies.
- **Mentoring:** Offering one-on-one mentoring to support students’ personal and professional growth, helping them navigate challenges and achieve their goals.
- **Wellness:** Promoting mental and physical well-being through workshops, resources, and events that encourage healthy lifestyles and emotional resilience.

To learn more about our programs or to get involved, email: LRC@waubonsee.edu

Join our
canvas course:



Waubonsee Students - Your Health and Wellness Matter!

STUDENTS: USE THE FITNESS CENTER FOR FREE!



The Fitness Center is available for FREE

for all Waubonsee students. Appropriate for all fitness levels, it has a wide range of cardiovascular and strength training equipment, free weights, a walking track, locker rooms, and showers. ***Waubonsee's Fitness Center is located on the first floor of Erickson Hall on the Sugar Grove Campus.***

Visit waubonsee.edu/Fitness



WAUBONSEE



STUDENT SOCIAL INFLUENCER

@ Waubonsee Community College

Now is Your Chance to be a Waubonsee Influencer!

You'll share your unique student perspective on Instagram with engaging photos and videos through the main college channels as well as your own channel. Our influencers play a critical role in helping current and prospective students connect with the Waubonsee community.

Interested? Please email Bayley at bmurphy1@waubonsee.edu for more information.

Social Leaders

A Student Leadership Program

The Social Leaders Program helps new and experienced students develop and/or strengthen their leadership skills. It is designed to reinforce leadership concepts in the sessions through collaborative conversations, activities, video clips, and more.

As a participant, students will be able to identify a campus issue, learn how to utilize their networks, and strategize an action plan to make a real impact at Waubensee Community College! Students will learn about Social Impact which is defined as, "The effect on people and communities that happens as a result of an action or inaction, an activity, project, program or policy."

Contact studentlife@waubensee.edu to join the next session!



REGISTER TO VOTE

BECAUSE YOUR VOTE MATTERS



You can do the following things:

- Check your Voter Registration Status
- Register to Vote
- Request an Absentee Ballot

WAUBONSEE.EDU/VOTE

Campus Bookstores

MAKE US YOUR FIRST STOP FOR TEXTBOOKS, REQUIRED CLASS SUPPLIES, CLOTHING AND GENERAL MERCHANDISE.



- Textbooks
- Waubonsee and Chiefs gear, laptops, headphones, backpacks, professional wear, school supplies, snacks and more!
- Uniforms for Auto Tech, Auto Body and Nursing Programs
- Art Supply, Engineering, ESL, and Nursing Kits

Matco & Neu tools available by special order.

Order your textbooks online at:
bookstore.waubonsee.edu

Pickup or delivery to your home
or any campus available.

For textbook information, contact:

(630) 466-2744 Sugar Grove

(630) 906-4163 Aurora Downtown

Bookstore Customer Service:

(630) 466-2908

Bookstore Locations and Hours:

SUGAR GROVE CAMPUS, First Floor Dickson Center

Mon.-Wed. 8 a.m. - 6:30 p.m.

Thurs./Fri. 8 a.m. - 4:30 p.m.

AURORA DOWNTOWN CAMPUS, 18 South River Street

(Use Galena Blvd. entrance.)

Mon.-Wed. 7:30 a.m. - 6:30 p.m.

Thurs./Fri. 7:30 a.m. - 4:30 p.m.

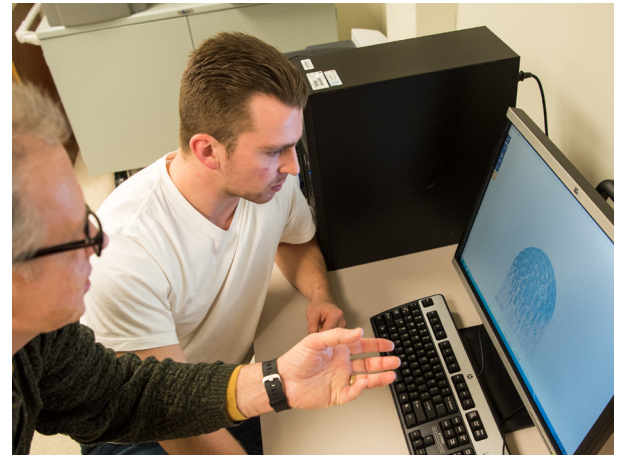
AIM HIGH, ACHIEVE MORE! CHALLENGE YOURSELF WITH THE

HONORS PROGRAM

APPLY TODAY!



Special scholarship opportunities available!



Honors Program students work one-on-one with faculty in any course on projects that deepen understanding of the course content and further learning.

Students are required to apply for admission to the Honors Program and must meet specific criteria. Info regarding scholarships, criteria, deadlines, and how to apply can be found at

waubonsee.edu/honors

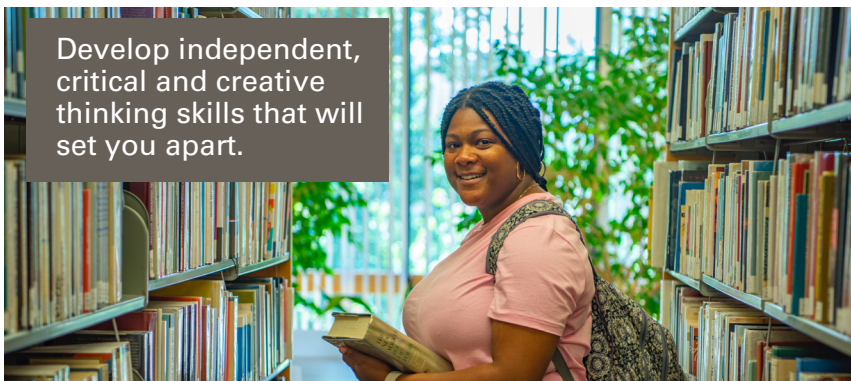
Questions? Email honors@waubonsee.edu



Honors student benefits:

- ✓ Competitive advantage in college admissions and scholarship applications
- ✓ Opportunities to apply for full-tuition scholarships at North Central College and Elmhurst University
- ✓ Distinct transcript notation indicating honors courses taken
- ✓ Honors Program Graduate notation on your diploma and transcript if you complete 15 or more semester hours of honors courses with an overall GPA of 3.0 in honors courses

Develop independent, critical and creative thinking skills that will set you apart.



If you're feeling **OVERWHELMED** or **STRESSED OUT**, we are here to help!

Meet our Peer Support Leaders!



What is a Peer Support Leader?

Peer Support Leaders are students - just like you!

They're fellow students just like you who can relate to what you're going through. Whether you're dealing with academic pressure, personal issues, or just feeling burnt out, they're here to help you find practical ways to cope.

Our Peer Support Leaders are trained in stress management techniques and can also point you towards additional resources if needed. So if you're struggling or need someone to talk to, give us a call at **(630) 466-2361** or reach out to peersupport@waubonsee.edu to schedule an appointment. We're here to help you succeed!

Join our
canvas course:



*We'd love to talk
with you!*

**Sugar Grove
Drop-In Hours:
Bodie Hall, Room 247.**

**Monday: 8:30-10:30
a.m. and 2-4 p.m.**

**Tuesday: 8-9 a.m. and
12:30-1:30 p.m.**

**Wednesday: 8-9 a.m.
and 1-3 p.m.**

**Thursday: 8-9 a.m. and
12:30-2:30 p.m.**

**Aurora Downtown
Drop-In Hours:
Stop by Room 110.**

Tuesday, 2-4 p.m.

Wednesday, 1-3 p.m.

**or make an
appointment.**

We're Hiring!

If you are a current Waubonsee student looking for a part-time job, consider employment right here on campus!

Student Worker ~ Student Ambassador ~ Federal Work Study

Compensation Rate: \$15.25/hour

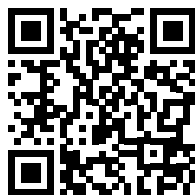
Work Schedule: Varies Fall, Spring, and Summer, provided the student is registered within that term*

Work Hours: Up to 25 hours per week

A few of the areas looking for assistance:

- Academic Support/Peer Mentors/ Tutors
- Admissions/ Student Ambassadors
- Adult Education
- Art Lab Assistant
- Athletics/ Fitness Center
- Biology Lab Assistant
- Bookstore
- Business, Technology and Workforce Education - Welding
- Diversity, Equity, and Inclusion (DEI)
- Finance
- Financial Aid
- Financial Education – Money Matters
- Human Resources (HR)
- Information Technology (IT)
- Library
- Marketing and Communications
- Media Services (IT)
- Public Safety Cadets
- Student Life
- Student Services and Alumni Relations
- Student Success and Retention
- Counseling and Student Support

Get more information and apply here!



**Must be enrolled in at least one credit class at Waubonsee.*

View employment opportunities: waubonsee.edu/studentjobs

Waubonsee does not discriminate on the basis of any individual's actual or perceived race, color, creed, religion, gender, gender identity, sex, sexual orientation, age, national origin, ancestry, veteran's status, military status, unfavorable discharge from military service, marital status, order of protection status, pregnancy, disability, citizenship status or any other characteristic protected by law in its programs or activities. Inquiries regarding this policy may be directed to: Michele Needham, Title IX/ADA/Section 504 Coordinator, Route 47 at Waubonsee Drive, Sugar Grove, IL 60554, compliance@waubonsee.edu.



WAUBONSEE
COMMUNITY COLLEGE

Human Resources

KNOW YOUR IX

Title IX Rights and Responsibilities at Waubonsee Community College

1 Title IX is a federal civil rights law that prohibits sex discrimination in educational programs and activities. It applies to all students, employees, and visitors.

2 Sex discrimination includes sexual harassment, sexual violence, and gender-based discrimination.

3 Title IX applies to everyone, regardless of gender, gender expression or sexual orientation.

4 Title IX requires equal access to recruitment, admission, financial aid, employment, housing, and activities.

5 Schools must be proactive in eliminating sex discrimination on campus.

6 Schools must have procedures for handling complaints of sex discrimination, sexual harassment, and sexual violence. At Waubonsee, you can make a report at waubonsee.edu/title-ix.

7 Schools shall not discriminate or exclude any student from its educational program or activity on the basis of pregnancy, childbirth, false pregnancy, termination or recovery therefrom.

8 Schools may not retaliate against someone filing a complaint and must keep complainants safe from other retaliatory harassment.

9 All public and private schools receiving federal funds, including Waubonsee Community College, must comply with Title IX.

For more information, visit waubonsee.edu/title-ix



WAUBONSEE
COMMUNITY COLLEGE

